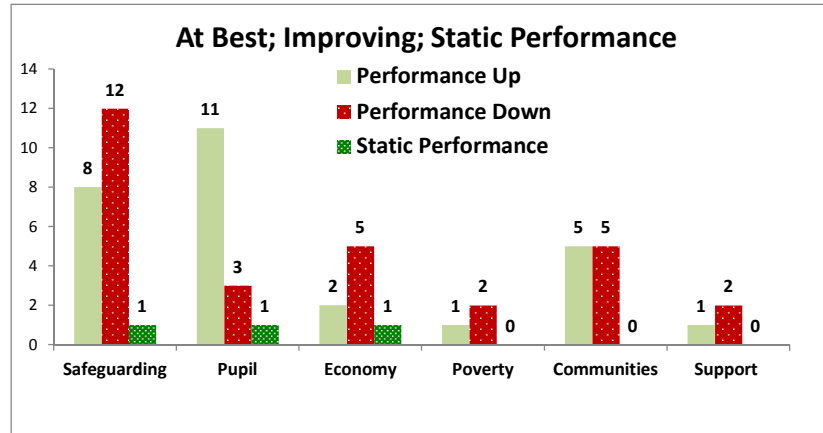
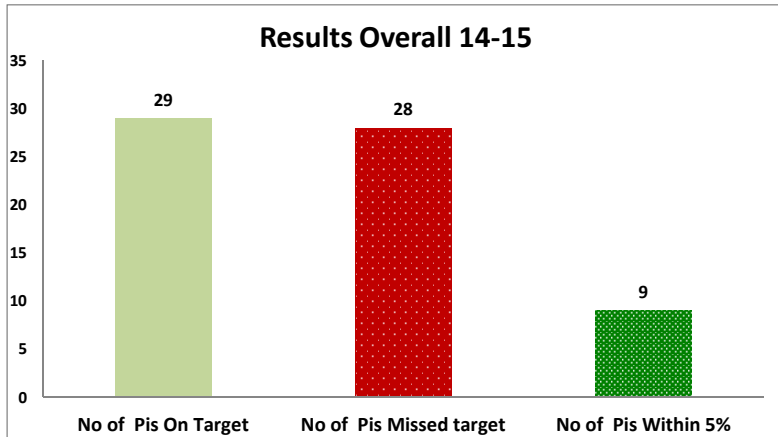
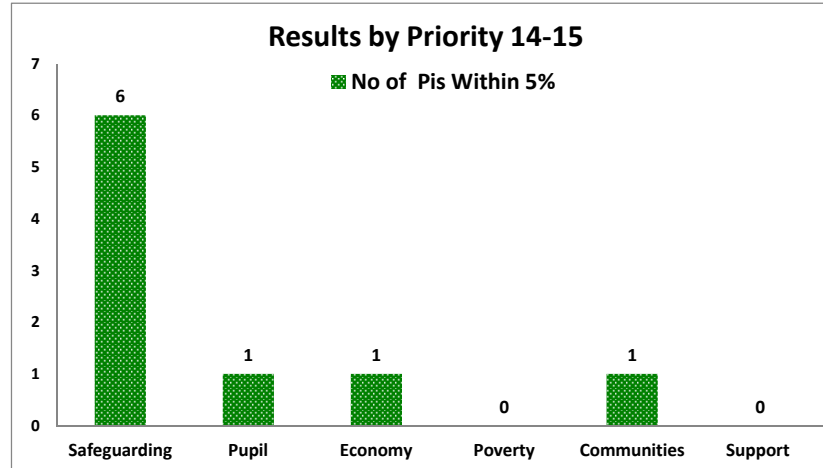
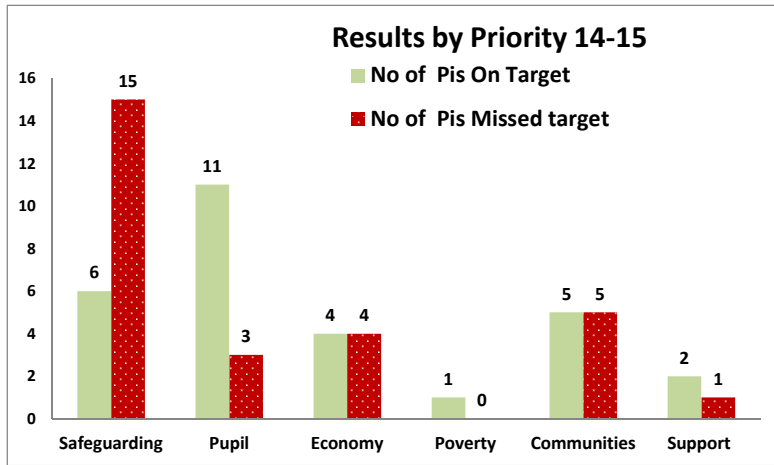




### Strategic End of Year (EOY) PI Report 2014-15 by Priority



PI & desired direction of Travel	Result	Target	Target for	Perform	N – Numerator * D – Denominator		Swansea's Position in Wales 2013/14	Comments (Explanation and Actions)	Responsible Head of Service
	14-15	14-15	15-16	13-14	14-15	13-14			
<b>Priority 1 - Safeguarding Vulnerable People</b>									
<b>CFS1 ↓</b>	<b>GREEN</b>								
CFS1 - Number of children becoming looked after	213.00	215.00	180	↓ 190.00	213	190	N/A - local indicator	Change in numbers becoming LAC consistent with normal expectations. Entry to care continues to be scrutinised at the highest level.	Julie Thomas
					D				
					1	1			
<b>CFS6 ↓</b>	<b>RED</b>								
CFS6 - Total Number of children in need (open cases) in year	5125.00	4852.00	4852	↓ 4853	5,125	4,853	N/A - local indicator	The total number of cases has increased as we have revised our operating model.	Julie Thomas
					D				
					1	1			
<b>CFS7 ↓</b>	<b>GREEN</b>								
CFS7 - Percentage of children on the Child Protection Register who have been de-registered and then re-registered	17.9%	19.1%	19%	↑ 19.2%	41	44	N/A - local indicator		Julie Thomas
					D				
					229	229			
<b>CFS8 ↓</b>	<b>GREEN</b>								
CFS8 - Percentage of children who remain on the Child Protection Register for more than one year	11.4%	11.4%	11%	⇒ 11.4%	26	26	N/A - local indicator		Julie Thomas
					D				
					229	229			
<b>CFS10 ↓</b>	<b>GREEN</b>								
CFS10 - Number of children in residential care	44.00	53.00	50	↑ 54	44	54	N/A - local indicator		Julie Thomas
					D				
					1	1			

PI & desired direction of Travel	Result	Target	Target for	Perform	N – Numerator * D – Denominator		Swansea's Position in Wales 2013/14	Comments  (Explanation and Actions)	Responsible Head of Service
	14-15	14-15	15-16	13-14	14-15	13-14			
<b>SCC004↓</b>  SCC004 - The percentage of children looked after on 31 March who have had three or more placements during the year	<b>RED</b>  <b>10.18%</b>	7%	7%	↓ 7.99%	SCC004NM - The number of looked after children who had three or more separate placements during the financial year.  <b>52</b>	<b>43</b>  SCC004DM - The total number of children who were looked after at 31 March  <b>511</b>	8th	Within acceptable target range, Child and Family Services aims to achieve safer permanence for each child, and some placement changes are necessary to achieving the best possible outcomes.	Julie Thomas
<b>SCC010 ↓</b>  SCC010 - The percentage of referrals that are re-referrals within 12 months	<b>AMBER</b>  <b>16.7%</b>	16%	15%	↑ 19.59%	SCC010NM - Number of referrals during the year that were re-referrals.  <b>301</b>	<b>313</b>  SCC010DM - Total number of referrals during the year  <b>1,804</b>	10th	Moving towards target. Changes in process at the front door will help to achieve further progress towards target in 2015/16.	Julie Thomas
<b>SCC011a ↑</b>  SCC011a - The percentage of initial assessments that were completed during the year where there is evidence that the child has been seen by a Social Worker	<b>RED</b>  <b>80.09%</b>	88%	88%	↓ 83.17%	SCC011aNM - The number of initial assessments that took place during the year where the child has been seen by the Social Worker  <b>1,207</b>	<b>1,092</b>  SCC011aDM - The number of initial assessments that took place during the year  <b>1,507</b>	11th	An increase in the number of IA's completed has led to the figure for those not seen increasing. It is an inevitability that some families are difficult to engage with and cannot be seen during the IA process. All cases where children aren't seen are followed up to ensure that children are seen subsequently, for example as part of the core assessment process.	Julie Thomas

PI & desired direction of Travel	Result	Target	Target for	Perform	N – Numerator * D – Denominator		Swansea's Position in Wales 2013/14	Comments  (Explanation and Actions)	Responsible Head of Service
	14-15	14-15	15-16	13-14	14-15	13-14			
<b>SCC011b †</b>  SCC011b - The percentage of initial assessments that were completed during the year where there is evidence that the child has been seen alone by a Social Worker	<b>RED</b>  <b>38.02%</b>	45%	45%	↓ 42.65%	SCC011bNM - The number of initial assessments that took place during the year where the child has been seen alone by the Social Worker  <b>573</b>	<b>560</b>  SCC011bDM - The number of initial assessments that took place during the year  <b>1,507</b>	<b>13th</b>	An increase in the number of IA's completed has led to the figure for those not seen alone increasing. Social workers may be seeing the child in the company of other professionals, and next year we aim to be more consistent about the practice standards expected in this area. All cases where children aren't seen are followed up to ensure that children are seen subsequently.	Julie Thomas
<b>SCC021†</b>  SCC021 - The percentage of looked after children reviews carried out within statutory timescales	<b>AMBER</b>  <b>98.19%</b>	98.5%	98.50%	↑ 98.13%	SCC021NM - The number of looked after children reviews that were due in the year and were carried out within the statutory timescales.  <b>1,304</b>	<b>1,260</b>  SCC021DM - The number of reviews of looked after children that were due in the year.  <b>1,328</b>	<b>5th</b>	Less than 0.5% away from target, and slight improvement on last year. Through the work of the Service Quality Unit, we can expect further improvement in this area which is vital to the Safe LAC Reduction strategy.	Julie Thomas
<b>SCC030a †</b>  SCC030a - The percentage of young carers known to Social Services who were assessed	<b>RED</b>  <b>71.0%</b>	100%	100%	↓ 100%	SCC030aNM - The number of young carers known to Social Services who were assessed during the year.  <b>57</b>	<b>49</b>  SCC030aDM - The number of young carers known to Social Services during the year.  <b>80</b>	<b>1st</b>	Data relates to the specific young carers service provided by Crossroads. All of the 30 who were not assessed during the year were being supported during the year having been previously-assessed.	Julie Thomas
<b>SCC033d †</b>  SCC033d - The percentage of young people formerly looked after with whom the authority is in contact at the age of 19	<b>RED</b>  <b>89.74%</b>	95%	95%	↑ 81.08%	SCC033dNM - Number of young people whose 19th birthday falls within the year ending 31 March, who were looked after by the local authority on their 16th birthday with whom the authority is in contact at the age of 19  <b>35</b>	<b>30</b>  SCC033dDM - Number of young people whose 19th birthday falls within the year ending 31 March, who were looked after by the local authority on their 16th birthday.  <b>39</b>	<b>19th</b>	Improved performance, with only 4 young people failing to engage with the service this year. Further improvements have been proposed, as part of a Permanence Review, to help create a new, better POST 16 service to improve the level of take up and support to care leavers.	Julie Thomas

PI & desired direction of Travel	Result	Target	Target for	Perform	N – Numerator * D – Denominator		Swansea's Position in Wales 2013/14	Comments (Explanation and Actions)	Responsible Head of Service
	14-15	14-15	15-16	13-14	14-15	13-14			
<p><b>SCC033e †</b></p> <p>SCC033e - The percentage of young people formerly looked after with whom the authority is in contact, who are known to be in suitable, non-emergency accommodation at the age of 19</p>	<b>GREEN</b>  100%	97%	100%	↑ 96.67%	<p>SCC033eNM - Number of young people whose 19th birthday falls within the year ending 31 March, who were looked after by the local authority on their 16th birthday with whom the authority is in contact at the age of 19 and who are known to be in suitable, non-emergency accommodation</p> <p>35</p> <p>29</p> <p>SCC033eDM - Number of young people whose 19th birthday falls within the year ending 31 March, who were looked after by the local authority on their 16th birthday.</p> <p>35</p> <p>30</p>	6th		Julie Thomas	
<p><b>SCC033f †</b></p> <p>SCC033f - The percentage of young people formerly looked after with whom the authority is in contact, who are known to be engaged in education, training or employment at the age of 19</p>	<b>GREEN</b>  65.71%	60%	70%	↑ 46.67%	<p>SCC033fNM - Number of young people whose 19th birthday falls within the year ending 31 March, who were looked after by the local authority on their 16th birthday with whom the authority is in contact at the age of 19 and who are known to be engaged</p> <p>23</p> <p>14</p> <p>SCC033fDM - Number of young people whose 19th birthday falls within the year ending 31 March, who were looked after by the local authority on their 16th birthday.</p> <p>35</p> <p>30</p>	15th		Julie Thomas	
<p><b>SCC034 †</b></p> <p>SCC034- The percentage of child protection reviews carried out within statutory timescales during the year</p>	<b>AMBER</b>  96.2%	98.0%	98%	↓ 98.14%	<p>SCC034NM - The number of reviews of children on the Child Protection Register due in the year that were carried out within the statutory timescales.</p> <p>684</p> <p>580</p> <p>SCC034DM - The number of reviews of children on the Child Protection Register that were due in the year.</p> <p>711</p> <p>591</p>	14th	A small reduction in performance - 14 more due reviews during the entire year would have preserved our performance from last year. We will evaluate reasons for the late reviews and apply process improvements .	Julie Thomas	

PI & desired direction of Travel	Result	Target	Target for	Perform	N – Numerator * D – Denominator		Swansea's Position in Wales 2013/14	Comments  (Explanation and Actions)	Responsible Head of Service
	14-15	14-15	15-16	13-14	14-15	13-14			
<b>SCC039†</b>  SCC039 - The percentage of health assessments for looked after children due in the year that have been undertaken	<b>AMBER</b>  <b>95.99%</b>	98%	98%	↓ 98.12%	SCC039NM - The number of health assessments for looked after children due in the year that have been undertaken  <b>647</b>	<b>677</b>  SCC039DM - The number of health assessments for looked after children due to be undertaken in the year  <b>674</b>	1st	Difficulties in obtaining up to date health assessments for Swansea's looked after children placed, who are place in RCT, has contributed to a decrease in performance in 2014/15. Our NHS colleagues, within the LAC Health Team have put in place a plan to address this in the year ahead.	Julie Thomas
<b>SCC042a†</b>  SCC042a - The percentage of initial assessments completed within 7 working days	<b>AMBER</b>  <b>89.18%</b>	93%	93%	↓ 91.47%	SCC042aNM - The number of initial assessments completed within 7 working days.  <b>1,344</b>	<b>1,201</b>  SCC042aDM - The number of initial assessments completed during the year  <b>1,507</b>	4th	There has been a significant increase in number of IA's completed, due to a change in the front door process. As this new and revised process model becomes embedded performance is expected to stabilise in the year ahead	Julie Thomas
<b>SCC042b↓</b>  SCC042b - The average time taken to complete initial assessments that took longer than 7 working days to complete	<b>RED</b>  <b>12.02</b>	10	10	↓ 11.89	SCC042bNM - The total number of working days taken to complete all initial assessments where the number of working days taken was 8 or more  <b>1,959</b>	<b>1,332</b>  SCC042bDM - The total number of initial assessments that took 8 days or more to complete.  <b>163</b>	3rd	There has been a significant increase in number of IA's completed, due to a change in the front door process. As this new and revised process model becomes embedded performance is expected to stabilise in the year ahead	Julie Thomas
<b>SCC043a†</b>  SCC043a - The percentage of required core assessments completed within 35 working days	<b>RED</b>  <b>70.13%</b>	84%	84%	↓ 81.79%	SCC043aNM - The number of required core assessments completed within 35 working days during the year  <b>1,033</b>	<b>943</b>  SCC043aDM - The number of core assessments that were completed during the year  <b>1,473</b>	14th	There has also been an increase in number of CA's being completed, due to high demand and, to some extent, as an unintended consequence of changes in the front door. As the new front door process becomes embedded performance will stabilise in the year ahead	Julie Thomas



PI & desired direction of Travel	Result	Target	Target for	Perform	N – Numerator * D – Denominator		Swansea's Position in Wales 2013/14	Comments (Explanation and Actions)	Responsible Head of Service
	14-15	14-15	15-16	13-14	14-15	13-14			
<b>Priority 2: Improving Pupil attainment</b>									
<b>EDCP12a↓</b>	<b>GREEN</b>	21	16	↑	19	EDCP12aNM - Pupils receiving fixed term exclusions - primary schools		N/A - local indicator	Robin Brown
						17	19		
						D			
EDCP12a - Pupils receiving fixed term exclusions - primary schools	17	21	16	↑	19	1	1		
<b>EDCP12b↓</b>	<b>GREEN</b>	420	390	↑	429	EDCP12bNM - Pupils receiving fixed term exclusions - secondary schools		N/A - local indicator	The overall reduction in secondary age pupils receiving fixed term exclusions continues.
						404	429		
						D			
EDCP12b - Pupils receiving fixed term exclusions - secondary schools	404	420	390	↑	429	1	1		
<b>EDCP14↑</b>	<b>GREEN</b>	83.0%	83.0%	↑	82.6%	EDCP14NM - Learners leaving Employment Training with a positive outcome		N/A - local indicator	Robin Brown
						784	890		
						EDCP14DM - All learners participating in Employment Training programmes			
EDCP14 - Learners leaving Employment Training with a positive outcome	83.0%	83.0%	83.0%	↑	82.6%	948	1,078		
<b>EDCP18c ↓</b>	<b>RED</b>	3.00%	3.5%	↓	3.16%	EDCP18cNM - Pupils known to be NOT in Education, Employment or Training at 16 (not including those who have moved away)		N/A - local indicator	It is proving very difficult to find suitable places in education, employment or training for some pupils with specific needs. The authority and partners are working on this. Note: this is the Swansea local calculation method.
						95	85		
						EDCP18cDM - All Pupils in Year 11 cohort			
EDCP18c - The percentage of young people (at 16 years) known to be Not in Education, Employment or Training (NEET)	3.71%	3.00%	3.5%	↓	3.16%	2,560	2,693		Helen Morgan-Rees



PI & desired direction of Travel	Result	Target	Target for	Perform	N – Numerator * D – Denominator		Swansea's Position in Wales 2013/14	Comments (Explanation and Actions)	Responsible Head of Service
	14-15	14-15	15-16	13-14	14-15	13-14			
EDCP261  EDCP26 - Capped Points score at GCSE	<b>GREEN</b>  350.0	350	355	↑ 338.90	EDCP26NM - For every pupil on roll at January PLASC in Year 11, take the total points scored for their best 8 recognised qualifications and sum the points  887,888	902,491	N/A - local indicator		Helen Morgan-Rees
					EDCP26DM - The number of pupils on roll at January PLASC in Year 11  2,539	2,663			
EDCP271  EDCP27 - Foundation Phase Indicator: the percentage of children in Year 2 (age 7) who are assessed to have achieved Outcome 5 or higher in each of the Language & Communication in English/Welsh, Mathematical Development and Personal & Social Development.	no rag  83.9%	n/a	85.2%	↑ 80.1%	EDCP27NM - Number of pupils in Year 2 age 7 who are assessed to have achieved Outcome 5 or higher in each of Language & Communication in English/Welsh, Mathematical Development and Personal & Social Development.  2,172	2,023	N/A - local indicator	First year of indicator in corporate suite. Performance at 83.9% had improved on previous year when it was 80.1%.	Helen Morgan-Rees
					EDCP27DM - All pupils on roll in Year 2 on the second Tuesday in May but excluding pupils who are new to the English and Welsh based education system (NEWBEs) and those who are dual subsidiary registered.  2,588	2,526			
EDU003 ↑  EDU003 - The percentage of pupils eligible for assessment at the end of Key Stage 2, in schools maintained by the local authority, achieving the Core Subject indicator, as determined by Teacher Assessment	<b>GREEN</b>  87.29%	86.00%	88.30%	↑ 84.25%	EDU003NM - The number of pupils assessed at the end of Key Stage 2, in schools maintained by the local authority, achieving the Core Subject Indicator, as determined by Teacher Assessment  2,178	2,033	13th		Helen Morgan-Rees
					EDU003DM - Total number of pupils assessed at the end of Key Stage 2, in schools maintained by the local authority  2,495	2,413			

PI & desired direction of Travel	Result	Target	Target for	Perform	N – Numerator * D – Denominator		Swansea's Position in Wales 2013/14	Comments  (Explanation and Actions)	Responsible Head of Service
	14-15	14-15	15-16	13-14	14-15	13-14			
<b>EDU004 ↑</b>  EDU004 - The percentage of pupils assessed at the end of Key Stage 3, in schools maintained by the local authority, achieving the Core Subject indicator, as determined by Teacher Assessment	<b>GREEN</b>  80.92%	78.00%	83.20%	↑ 76.45%	EDU004NM - The number of pupils assessed at the end of Key Stage 3, in schools maintained by the local authority, achieving the Core Subject Indicator, as determined by Teacher Assessment  2,002      1,850  EDU004DM - The total number of pupils assessed at the end of Key Stage 3, in schools maintained by the local authority  2,474      2,420	14th		Helen Morgan-Rees	
<b>EDU008a ↓</b>  EDU008a - The number of permanent exclusions during the academic year per 1,000 pupils from primary schools	<b>GREEN</b>  0.00	0.00	0.00	→ 0.00	EDU008aNM - Number of permanent exclusions during the academic year, upheld by the Governing Body, in primary schools in years 1 or above maintained by the local authority  0      0  EDU008aDM - Total number of pupils on roll in local authority maintained primary schools in years 1 or above at the time of the annual schools census in January  18,006      14,994	No National Comparison available for 13/14		Robin Brown	
<b>EDU008b ↓</b>  EDU008b - The number of permanent exclusions during the academic year per 1,000 pupils from secondary schools	<b>AMBER</b>  0.41	0.40	0.40	↓ 0.16	EDU008bNM - Number of permanent exclusions during the academic year, upheld by the Governing Body, in secondary schools in years 11 or below maintained by the local authority  5      2  EDU008bDM - Total number of pupils on roll in local authority maintained secondary schools in years 11 or below at the time of the annual schools census in January  12,083      12,383	No National Comparison available for 13/14	There was a slight rise in the very low number of secondary age pupils permanently excluded. These were the pupils for whom no managed move was possible. The number of pupils was still on target.	Robin Brown	
<b>EDU009a ↓</b>  EDU009a - The average number of school days that permanently excluded pupils did not receive an offer of full time appropriate education provision during academic year	<b>GREEN</b>  15.40	16.00	21.00	↑ 31.00	EDU009aNM - The sum of the number of school days beyond the 16th school day that each permanently excluded pupil has not received an offer of appropriate full time education provision  77      62  EDU009aDM - Total number of pupils permanently excluded by schools during the academic year  5      2	12th	Performance improved on the previous year. Although there were more pupils involved in the indicator, fulltime provision was sourced more quickly.	Robin Brown	

PI & desired direction of Travel	Result	Target	Target for	Perform	N – Numerator * D – Denominator		Swansea's Position in Wales 2013/14	Comments  (Explanation and Actions)	Responsible Head of Service				
	14-15	14-15	15-16	13-14	14-15	13-14							
<p><b>EDU009b↓</b></p> <p>EDU009b - The average number of school days that permanently excluded pupils did not receive an offer of part time appropriate education provision during the academic year</p>	<p><b>RED</b></p> <p><b>15.40</b></p>	6.00	21.00	↓ 14.50	<p>EDU009bNM - The sum of the number of school days beyond the 16th school day that each permanently excluded pupil has not received an offer of appropriate part time education provision</p> <table border="1" style="width: 100%; border-collapse: collapse;"> <tr> <td style="text-align: center;">77</td> <td style="text-align: center;">29</td> </tr> </table> <p>EDU009bDM - Total number of pupils permanently excluded by schools during the academic year</p> <table border="1" style="width: 100%; border-collapse: collapse;"> <tr> <td style="text-align: center;">5</td> <td style="text-align: center;">2</td> </tr> </table>		77	29	5	2	12th	Performance declined as it was not possible to provide part-time provision that met the definition of this PI (over 10 hours per week) prior to finding fulltime provision.	Robin Brown
77	29												
5	2												
<p><b>EDU016a↑</b></p> <p>EDU016a - Percentage of pupil attendance in primary schools</p>	<p><b>GREEN</b></p> <p><b>94.43%</b></p>	94.10%	94.80%	↑ 93.02%	<p>EDU016aNm - The total number of sessions missed by all pupils in primary schools</p> <table border="1" style="width: 100%; border-collapse: collapse;"> <tr> <td style="text-align: center;">5,481,380</td> <td style="text-align: center;">5,244,555</td> </tr> </table> <p>EDU016aDM - The total number of sessions possible for all pupils</p> <table border="1" style="width: 100%; border-collapse: collapse;"> <tr> <td style="text-align: center;">5,804,434</td> <td style="text-align: center;">5,638,140</td> </tr> </table>		5,481,380	5,244,555	5,804,434	5,638,140	20th	Robin Brown	
5,481,380	5,244,555												
5,804,434	5,638,140												
<p><b>EDU016b↑</b></p> <p>EDU016b - Percentage of pupil attendance in secondary schools</p>	<p><b>GREEN</b></p> <p><b>93.35%</b></p>	93.30%	93.80%	↑ 92.30%	<p>EDU016bNm - The total number of sessions missed by all pupils in secondary schools</p> <table border="1" style="width: 100%; border-collapse: collapse;"> <tr> <td style="text-align: center;">3,493,242</td> <td style="text-align: center;">3,482,718</td> </tr> </table> <p>EDU016bDM - The total number of sessions possible for all pupils</p> <table border="1" style="width: 100%; border-collapse: collapse;"> <tr> <td style="text-align: center;">3,742,283</td> <td style="text-align: center;">3,773,404</td> </tr> </table>		3,493,242	3,482,718	3,742,283	3,773,404	16th	Robin Brown	
3,493,242	3,482,718												
3,742,283	3,773,404												
<p><b>EDU017↑</b></p> <p>EDU017 - The percentage of pupils aged 15 at the preceding 31 August, in schools maintained by the local authority, who achieved the Level 2 Threshold including a GCSE grade A*-C in English or Welsh first language and maths</p>	<p><b>GREEN</b></p> <p><b>59.12%</b></p>	56.00%	62.00%	↑ 55.3%	<p>EDU017NM - The number of pupils aged 15 on roll in any local authority maintained school at the time of the annual School's Census who achieved the Level 2 threshold including a GCSE grade A*-C in English or Welsh first language and mathematics</p> <table border="1" style="width: 100%; border-collapse: collapse;"> <tr> <td style="text-align: center;">1,501</td> <td style="text-align: center;">1,473</td> </tr> </table> <p>EDU017DM - The total number of pupils aged 15 on 31 August and on roll in any local authority maintained school at the time of the annual School's Census in January</p> <table border="1" style="width: 100%; border-collapse: collapse;"> <tr> <td style="text-align: center;">2,539</td> <td style="text-align: center;">2,663</td> </tr> </table>		1,501	1,473	2,539	2,663	9th	Helen Morgan-Rees	
1,501	1,473												
2,539	2,663												

PI & desired direction of Travel	Result	Target	Target for	Perform	N – Numerator * D – Denominator		Swansea's Position in Wales 2013/14	Comments  (Explanation and Actions)	Responsible Head of Service
	14-15	14-15	15-16	13-14	14-15	13-14			

### Priority 3: Creating a vibrant and viable city and economy

<p>EC1 ↑</p> <p>EC1 - The percentage of all applicants and 3rd parties satisfied or very satisfied with the Planning application service</p>	<p>RED</p> <p>79.4%</p>	93.0%	93.0%	↓ 84.6%	<p>EC1NM - Total number of applicants and 3rd parties satisfied or very satisfied with the Planning application service</p> <table border="1" style="width: 100%;"> <tr> <td style="text-align: center;">208</td> <td style="text-align: center;">219</td> </tr> </table> <p>EC1DM - Total number of Planning questionnaires received in the quarter</p> <table border="1" style="width: 100%;"> <tr> <td style="text-align: center;">262</td> <td style="text-align: center;">259</td> </tr> </table>	208	219	262	259	N/A - local indicator	<p>During the period 262 surveys were received, of these 115 were from applicants and 147 from 3rd parties. 108 of the applicant responses were either satisfied or very satisfied (93.91%). 100 of 147 responses were either satisfied or very satisfied (68%). The majority of issues raised by 3rd parties were not related to service delivery but to dissatisfaction of the accuracy of information, outcome of the decisions, understanding of the planning process including the extent of communication from the department and the consultation process which are all prescribed under the provisions of the Town &amp; County Planning (Development Management) Order 2012. The department is developing and utilising the use of their document management system to show more correspondence and documents electronically and with the introduction of the new corporate website last year, it is hoped that the public understanding of the planning process and procedures will improve.</p>	Phil Holmes
208	219											
262	259											
<p>EC2 ↑</p> <p>EC2 - The percentage of all major and minor applications with an economic imperative that are approved</p>	<p>RED</p> <p>83.5%</p>	88.0%	88.0%	↓ 83.8%	<p>EC2NM - Total number of major and minor applications with an economic imperative that are approved</p> <table border="1" style="width: 100%;"> <tr> <td style="text-align: center;">528</td> <td style="text-align: center;">496</td> </tr> </table> <p>EC2DM - Total number of major and minor applications determined in the quarter</p> <table border="1" style="width: 100%;"> <tr> <td style="text-align: center;">632</td> <td style="text-align: center;">592</td> </tr> </table>	528	496	632	592	N/A - local indicator	<p>The service was restructured in in August 2014 and has been subject to disruption as a result of staff resources and the introduction of a document management system including re-engineering of business processes. There were 104 applications refused of which 10 major/minor applications were overturned at committee (9.6%). A new streamlined committee structure and scheme of delegation was introduced in January 2015, which will hopefully result in less committee overturns. Action: Improved chargeable pre application service introduced in April 2015 with the introduction of front loading of planning application process and further utilisation of the document management system; performance is expected to improve.</p>	Phil Holmes
528	496											
632	592											

PI & desired direction of Travel	Result	Target	Target for	Perform	N – Numerator * D – Denominator		Swansea's Position in Wales 2013/14	Comments (Explanation and Actions)	Responsible Head of Service
	14-15	14-15	15-16	13-14	14-15	13-14			
<b>BBMA1 ↑</b>  BBMA1 - Increase in the number of projects with social benefit clauses & Beyond Bricks and Mortar in their contracts	<b>GREEN</b>  19	18	19	→ 19	BBMA1NM - No. of BB&M projects containing SBCs from this current reporting year minus no. of BB&M projects containing SBCs from the previous year providing the increased number of projects worked on in the reporting year  19      19 1      1		N/A - local indicator		Phil Holmes
<b>ESD1↑</b>  ESD1 - Value of inward investment related to property-based projects where the authority owns some or all of the land (or adjoining land which facilitates the development) £millions	<b>GREEN</b>  12.00	10.50	20.00	↓ 24.70	ESD1NM - Value of inward investment related to property-based projects where the authority owns some or all of the land (or adjoining land which facilitates the development)  12      25 1      1		N/A - local indicator	The result for inward investment in period 14/15 is lower than the previous period primarily due to large projects in 13/14 being realised at Tawe Vale, Felindre and the former central library which resulted in the total inward investment exceeding original targets. The 14/15 projection reflects the realignment of investment without large project anomalies.	Phil Holmes
<b>EP28 ↑</b>  EP28 - The percentage of all planning applications determined within 8 weeks	<b>GREEN</b>  70.05%	70.00%	80.00%	↓ 71.77%	EP28NM - The number of all planning applications determined during the year within 8 weeks  1,221      1,111 EP28DM - The total number of all planning applications determined during the year  1,743      1,548		N/A - local indicator	The end of year target was affected by the introduction of a document management system at the end of 2013 and interim management arrangements were still in place pending the office restructure in August 2014. This subsequently led to disruption in the validation of new planning applications and a greater focus on clearing the backlog of older applications. This resulted in poor performance in Quarters 1 and 2 (61% in Q1 and 63% in Q2). Following the section restructure in Aug 2014, performance improved to 83% in Quarter 3 and was 74% in Quarter 4. Action: Continue to monitor and improve efficiencies in the planning process, including the introduction of front loading of planning applications with further utilisation of the document management system; performance is expected to improve.	Phil Holmes

PI & desired direction of Travel	Result	Target	Target for	Perform	N – Numerator * D – Denominator		Swansea's Position in Wales 2013/14	Comments  (Explanation and Actions)	Responsible Head of Service
	14-15	14-15	15-16	13-14	14-15	13-14			
<b>PLA004a ↑</b>  PLA004a - The percentage of major planning applications determined during the year within 13 weeks	<b>RED</b>  <b>30%</b>	41%	41%	↓ 41%	11	11	11th	The end of year target was affected by the introduction of a document management system at the end of 2013 and interim management arrangements were still in place pending the office restructure in August 2014. This subsequently led to disruption in the validation of new planning applications and a greater focus on clearing the backlog of older applications. A high percentage of the Major applications are subject to s.106 legal agreements which historically take longer to sign off, this impacts on performance. However the Welsh Government has changed the calculation period for s.106 legal agreements applications based on when the application was decided rather than when the decision was dispatched. As a result, this should improve performance in the next 12 months.	Phil Holmes
<b>ETE5 ↑</b>  ETE5 - Damage to roads and pavements made safe within 24 hours	<b>AMBER</b>  <b>97.77%</b>	98.00%	99.00%	↑ 97.17%	1,316	1,373	N/A - local indicator	Reasonable result of 97.7% and this is due to staff resources in our emergency team, that have been filled through redeployment.	Stuart Davies
<b>THS012 ↓</b>  THS012 - Percentage of principal (A) roads, non-principal (B) roads and non-principal (C) roads that are in overall poor condition	<b>GREEN</b>  <b>4.8%</b>	8.0%	6.0%	↑ 6.7%	28	37	3rd	This indicator is produced by a third party using equipment standardised across Wales, and reflects the structural condition of our principal/main roads.	Stuart Davies

PI & desired direction of Travel	Result	Target	Target for	Perform	N – Numerator * D – Denominator		Swansea's Position in Wales 2013/14	Comments  (Explanation and Actions)	Responsible Head of Service
	14-15	14-15	15-16	13-14	14-15	13-14			
<b>Priority 4: Tackling poverty</b>									
<b>FSSOGa ↑</b>  FSSOGa - Percentage of Flying Start children assessed as performing at or above the developmental norm for 2 year	not set  53.4%			↓ 55.1%	FSSOGaNM - Total children assessed as at or above dev norms (seperately 2 year) 225   178 FSSOGaDM - Total children assessed (seperately 2 year) 421   323		N/A - local indicator	These are not outcomes where we would expect to see a year on year improvement - that would not be possible as we are not comparing like with like	Sarah Crawley
<b>FSSOGb ↑</b>  FSSOGb - Percentage of Flying Start children assessed as performing at or above the developmental norm for 3 year data.	not set  57.5%			↓ 59.4%	FSSOGbNM - Total children assessed as at or above dev norms (seperately 3 year) 258   187 FSSOGbDM - FSSOGDM - Total children assessed (seperately 3 year) 449   315		N/A - local indicator	These are not outcomes where we would expect to see a year on year improvement - that would not be possible as we are not comparing like with like	Sarah Crawley
<b>SIU01 ↑</b>  SIU01 - No. of staff / workers trained in Welfare Rights / Benefits advice appropriate to their role.	GREEN  688	500	500	↑ 580	SIU01NM - Number of staff/workers trained in welfare rights/benefits advice appropriate to their role 688   580 SIU01DM - 1   1		N/A - local indicator		Sarah Crawley
<b>EDFM1a ↑</b>  EDFM1a - Percentage of pupils identified in the Pupil Level Annual School Census who take up free school lunch – primary schools	not set  -			-	EDFM1aNM - Actual number of children eating free school meals - primary EDFM1aDM - Actual number of children known to be entitled to free school meals. - primary		N/A - local indicator	Due to a bereavement of a key staff member data will be unavailable for the foreseeable future	Brian Roles
<b>EDFM1b ↑</b>  EDFM1b - Percentage of pupils identified in the Pupil Level Annual School Census who take up free school lunch – secondary schools	not set  -			63%	EDFM1bNM - Actual number of children eating free school meals - secondary EDFM1bDM - Actual number of children known to be entitled to free school meals. - secondary 1,388 2,188		N/A - local indicator	Due to a bereavement of a key staff member data will be unavailable for the foreseeable future	Brian Roles

PI & desired direction of Travel	Result	Target	Target for	Perform	N – Numerator * D – Denominator		Swansea's Position in Wales 2013/14	Comments  (Explanation and Actions)	Responsible Head of Service				
	14-15	14-15	15-16	13-14	14-15	13-14							
<b>Priority 5: Building sustainable communities</b>													
<b>AS4 ↑</b>  AS4 - Percentage of clients returning home following reablement	<b>RED</b>  <b>51.2%</b>	60%	60%	↓ 53.9%	AS4NM - Number of clients returning home after a period of reablement <table border="1" style="width: 100%; border-collapse: collapse;"> <tr> <td style="text-align: center;">66</td> <td style="text-align: center;">83</td> </tr> </table> AS4DM - Total number of clients discharged <table border="1" style="width: 100%; border-collapse: collapse;"> <tr> <td style="text-align: center;">129</td> <td style="text-align: center;">154</td> </tr> </table>		66	83	129	154	N/A - local indicator	The nature of pressures on the NHS during 2014/15 led to an increase in discharges into the reablement beds (aka assessment beds). Such service users are likely to have a higher level of need and lower potential for reablement. Nonetheless these placements were preferable to immediate admission to a long-term care home.	Bozena Allen
66	83												
129	154												
<b>SCA001 ↓</b>  SCA001 - The rate of delayed transfers of care for social care reasons per 1,000 population aged 75 or over	<b>RED</b>  <b>4.70</b>	2.20	Between 4 & 6	↓ 2.50	SCA001NM - Total number of local authority residents experiencing a delayed transfer of care during the year for social care reasons <table border="1" style="width: 100%; border-collapse: collapse;"> <tr> <td style="text-align: center;">100</td> <td style="text-align: center;">52</td> </tr> </table> SCA001DM - Total population aged 75+ <table border="1" style="width: 100%; border-collapse: collapse;"> <tr> <td style="text-align: center;">21,254</td> <td style="text-align: center;">20,759</td> </tr> </table>		100	52	21,254	20,759	10th	During the latter half of the year, increases the pressures on the NHS resulted in very large numbers of people passing through hospitals. We are now working more closely with the NHS within the new multi-disciplinary Hubs and are planning ahead for the winter. We aim to reduce the numbers delayed for social care reasons.	Bozena Allen
100	52												
21,254	20,759												
<b>SCA002a ↑</b>  SCA002a - The rate of older people (aged 65 or over) helped to live at home per 1,000 population aged 65 or over	<b>RED</b>  <b>70.28</b>	75.00	72.00	↓ 73.51	SCA002aNm - Number of people aged 65 or over supported in the community <table border="1" style="width: 100%; border-collapse: collapse;"> <tr> <td style="text-align: center;">3,188</td> <td style="text-align: center;">3,262</td> </tr> </table> SCA002aDM - Total population aged 65 or over <table border="1" style="width: 100%; border-collapse: collapse;"> <tr> <td style="text-align: center;">45,361</td> <td style="text-align: center;">44,377</td> </tr> </table>		3,188	3,262	45,361	44,377	8th	There have been some practice and management issues during 2014/15 which are now being pro-actively addressed. The move to the hub model represents the opportunity to ensure that the reablement service delivers the expected outcomes.	Bozena Allen
3,188	3,262												
45,361	44,377												
<b>SCA002b ↓</b>  SCA002b - The rate of older people (aged 65 +) whom the LA supports in care homes per 1000 population aged 65 +	<b>GREEN</b>  <b>20.35</b>	20.90	20.00	↑ 21.50	SCA002bNm - Number of people aged 65 or over supported in care homes <table border="1" style="width: 100%; border-collapse: collapse;"> <tr> <td style="text-align: center;">923</td> <td style="text-align: center;">954</td> </tr> </table> SCA002bDM - Total population aged 65 or over <table border="1" style="width: 100%; border-collapse: collapse;"> <tr> <td style="text-align: center;">45,361</td> <td style="text-align: center;">44,377</td> </tr> </table>		923	954	45,361	44,377	15th		Bozena Allen
923	954												
45,361	44,377												



PI & desired direction of Travel	Result	Target	Target for	Perform	N – Numerator * D – Denominator		Swansea's Position in Wales 2013/14	Comments  (Explanation and Actions)	Responsible Head of Service
	14-15	14-15	15-16	13-14	14-15	13-14			
<p><b>SCA007↑</b></p> <p>SCA007 - The percentage of clients with a care plan at 31st March whose care plans should have been reviewed that were reviewed during the year</p>	<b>RED</b>  71.6%	81.5%	80.0%	↑ 81.00%	<p>SCA007NM - The number of clients with a care plan at 31 March who should have had their care plan reviewed who have had their care plan reviewed during the year</p> <p>4,398</p> <p>4,580</p> <p>SCA007DM - The number of clients with a care plan at 31 March that should have been reviewed during the year</p> <p>6,141</p> <p>5,647</p>	15th	The number of people having been reviewed during the year decreased by 4% (182) compared to last year. During 2014/15, there was considerable disruption caused to care management services by the Cheshire West Court judgments relating to Deprivation of Liberty Safeguards - increasing related referrals from 40 in 2013/14 to 1119 in 2014/15, a 28-fold increase in demand without additional resources. Staff who would otherwise have been carrying out reviews were thus carrying out the DOLs work required by the unexpected change in the law. There have also been a number of changes to management structures during the year leading to disruption to normal activity. The newly-established Hubs will review care management processes and resources during 2015/16.	Bozena Allen	
<p><b>SCA018↑</b></p> <p>SCA018 - The percentage of carers of adults who were offered an assessment or review of their needs in their own right during the year</p>	<b>AMBER</b>  94.9%	97.5%	97.5%	↓ 97.30%	<p>SCA018NM - The number of carers of adults who were offered an assessment or review of their needs in their own right during the year</p> <p>1,541</p> <p>1,808</p> <p>SCC018DM - The number of new carers of adults</p> <p>1,623</p> <p>1,858</p>	9th	The reported performance understates actual performance because it has been caused by errors in completing carers assessments. Within the new structure, there will be greater robustness and focus on performance management across adult services, reinforcing the importance of correct recording via effective staff training and line management.	Bozena Allen	
<p><b>SCA020↑</b></p> <p>SCA020 - The percentage of adult clients who are supported in the community during the year</p>	<b>GREEN</b>  84.77%	84.5%	85.3%	↑ 84.00%	<p>SCA020NM - Number of adult clients supported in the community</p> <p>5,866</p> <p>6,165</p> <p>SCA020DM - Total number of adult clients supported either in the community or in care homes</p> <p>6,920</p> <p>7,340</p>	17th		Bozena Allen	
<p><b>WMT004b↓</b></p> <p>WMT004b - The percentage of municipal waste collected by local authorities sent to landfill</p>	<b>GREEN</b>  43.19%	45.00%	42.00%	↑ 45.13%	<p>WMT004bNM - The tonnage of local authority collected municipal waste sent to landfill by the local authority</p> <p>47,625</p> <p>51,118</p> <p>WMT004bDM - The total tonnage of municipal waste collected by the local authority</p> <p>110,281</p> <p>113,277</p>	18th	This improvement is mainly as a result of the 3 bag limit, targeted door knocking, and a focus on trade waste, and puts us in a good position to achieve the WG statutory target for 15/16	Chris Howell	

PI & desired direction of Travel	Result	Target	Target for	Perform	N – Numerator * D – Denominator		Swansea's Position in Wales 2013/14	Comments (Explanation and Actions)	Responsible Head of Service
	14-15	14-15	15-16	13-14	14-15	13-14			
<b>WMT009b †</b>  WMT009b - The percentage of municipal waste collected by local authorities and prepared for reuse and/or recycled, including source segregated bio wastes that are composted or treated biologically in another way	<b>GREEN</b>  56.54%	55.00%	58.00%	↑ 53.30%	WMT009bNM - The tonnage of local authority collected municipal waste prepared for reuse, recycled and/or collected as source segregated bio wastes and composted or treated biologically in another way by the local authority <b>62,348</b>	<b>60,378</b>  WMT009bDM - The tonnage of municipal waste collected by the local authority <b>110,281</b>	<b>16th</b>	This improvement is mainly as a result of the 3 bag limit, targeted door knocking, and a focus on trade waste, and puts us in a good position to achieve the WG statutory recycling target of 58% for 15/16.	Chris Howell
<b>STS006 †</b>  STS006 - The percentage of reported fly tipping incidents cleared within 5 working days	<b>GREEN</b>  92.77%	92.00%	92.00%	↓ 94.32%	STS006NM - The number of reported fly tipping incidents in the quarter cleared within 5 working days <b>4,143</b>	<b>2,691</b>  STS006DM - The total number of fly tipping incidents recorded by the authority during the quarter <b>4,466</b>	<b>18th</b>	There has been an increase in recorded fly tipping however this may be partly due to improvements in recording of data.	Stuart Davies

PI & desired direction of Travel	Result	Target	Target for	Perform	N – Numerator * D – Denominator		Swansea's Position in Wales 2013/14	Comments  (Explanation and Actions)	Responsible Head of Service
	14-15	14-15	15-16	13-14	14-15	13-14			
<b>Supporting Services</b>									
<b>CH01 ↑</b>  The percentage of citizens satisfied with the overall standards of services provided by LA	<b>GREEN</b>  71.0%	68%	71%	↑ 68.00%	CH01NM - The number of citizens satisfied with the overall standards of services provided by LA 358      413 CH01DM - The total number of Swansea Voices respondents who completed this question 504      604		N/A - local indicator		Lee Wenham
<b>CFH007 ↑</b>  Percentage of Council Tax due for the financial year which was received by the authority	<b>GREEN</b>  97.17%	96.80%	NA	↓ 96.84%	CFH007NM - The amount of council tax received in the year. 92,748,734      86,930,435 CFH007DM - The total amount of council tax due for the financial year. 95,452,747      89,769,863		No National Comparison available for 13/14		Mike Hawes
<b>CHR002 ↓</b>  CHR002 - The number of working days/shifts per full time equivalent (FTE) local authority employee lost due to sickness absence	<b>RED</b>  9.56	8.00	8.00	↓ 8.79	CHR002NM - Total number of working days/shifts lost to sickness absence, for the relevant period 91864.65      85,149 CHR002DM - Average Number of FTE employees. 9,606      9,692		No National Comparison available for 13/14	<p>As mentioned in previous years, the new Management of Absence Policy was implemented in October 2012, with real time sickness data entry plus improved Management Reports. .</p> <p>In addition, the Corporate Health, Safety &amp; Wellbeing Services Occupational Health Unit delivery plan includes the following key activities which include the recommendations from the Sickness Absence TFG's.</p> <p>The Occupational Health Advisors and Stress Management Advisors/Councillors will also be leading on work streams designed to deliver the Corporate Health and Safety Action Plan;</p> <p>With regards to employees who are on short term sickness, there needs to be some form of supportive contact with employees. Therefore, it has been agreed that this role will be undertaken by HR to support managers to deliver their responsibilities under the management of Absence Policy by contacting the employees on day 3 of sickness absence to clarify the reason for continuing absence and encourage an early return to work. This role has been undertaken by a HR Officer from 5th April 2015 and for a period of 12 months.</p>	Steve Rees